

Akkreditiert gemäß
DIN EN 45011

DACH
DAC-ZE-002-08



**ISEGA – Forschungs-
und Untersuchungs-
Gesellschaft mbH
Aschaffenburg**



ISEGA

63704 Aschaffenburg, Postfach 100565
63741 Aschaffenburg, Zeppelinstr. 3-5
Germany
Telefon +49 (0) 60 21 / 49 89-0
Telefax +49 (0) 60 21 / 49 89-30
Email info@isega.de
<http://www.isega.de>

Aschaffenburg, 15 July 2011

From: Mr. Köttner
Kö/ma

BERICHT

Order No.: 2176/46 **Page 1 of 3 pages**

Client: Metsä Tissue Corp.
Tehtaankatu 16
35800 Mänttä / Finland


Date of order: 12 April 2011

Receipt of sample material: 11 March 2011

Origin of sample material: From the client

Purpose: Analysis of a paper sample for the compostability according to EN 13432


(Dr. Derra)


(Köttner)
Dipl.-Geoecologist

Der Bericht bezieht sich nur auf die hier beschriebenen Proben. Informationen u. statistische Daten zum Ergebnis sind auf Anfrage erhältlich.

Nichtakkreditierte Messungen waren zum Zeitpunkt der Beurkundung noch nicht validiert. Einzelne Prüfungen wurden wegen des eingeschränkten Anwendungsbereichs nicht zur Akkreditierung vorgesehen. Die für die Bewertung notwendige Genauigkeit ist in diesen Fällen durch das interne Qualitätsmanagement gewährleistet.

Geschäftsführer: Dr. Ralph Derra – Handelsregister: Aschaffenburg HRB 3329

Die Veröffentlichung von Ergebnissen unserer Arbeiten und Gutachten sowie die Verwendung für Werbezwecke bedürfen – auch auszugsweise – unserer schriftlichen Genehmigung
Erfüllungsort und Gerichtsstand Aschaffenburg

Akkreditiert gemäß DIN EN ISO / IEC 17025 (D-PL-14160-01-00) und gemäß DIN EN 45011 (DAC-ZE-002-08)

Sample material:

For analysis the following sample material was in hand:

Sample 1: Wet Strength Siliconized Paper

Carrying out of the Tests

Examination period: 13 April 2011 to 21 June 2011

The test for disintegration has been carried out according to the EN 13432 "Packaging. Requirements for packaging recoverable through composting and biodegradation".

1. Material characterization

Parameter	Method	Result	
Grammage *	DIN EN ISO 536	42.4	g/m ²

2. Compostability test (Disintegration)

The disintegration test had been carried out under practice-relevant conditions in an indoor test composting site. The sample material was put into an insulated composting box (pilot-plant scale) filled with fresh compost and green waste in defined ratios according to SOP 168.850. Samples were taken in regular time intervals. The temperature surveyed composting process was documented with photographs which are presented in the annex.

Week of composting	Retain on screen mesh 2 mm, [% weight]
	Sample 1 Wet Strength Siliconized Paper
1	28.9
2	4.6
3	5.6
4	< 0.1
5	---
6	---
7	---
8	---
9	---
10	---
11	---
12	---

The maximum admissible retain on a sieve with 2 mm screen mesh size after 12 weeks of composting according to EN 13432 is 10 %.

Evaluation

According to the test results and to the compostability criteria in the European standard EN 13432, the tested samples are evaluated as follows:

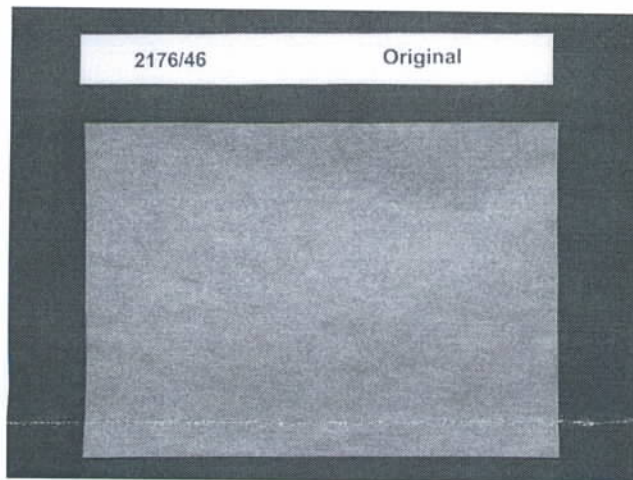
Sample 1: The Paper "Wet Strength Siliconized Paper" fulfils the requirements of EN 13432 with respect to compostability under practical conditions

Annex

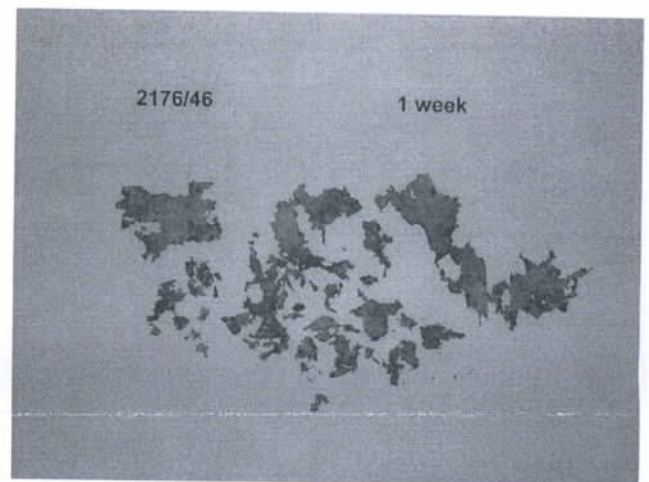
Photographic Documentation

Photographic Documentation

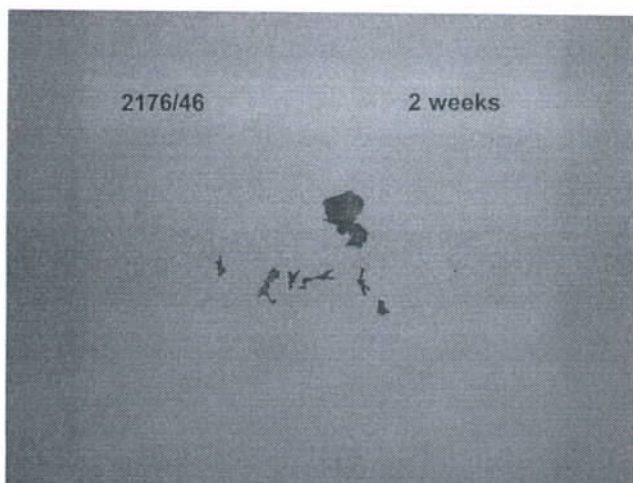
Sample 1 (Wet Strength Siliconized Paper)



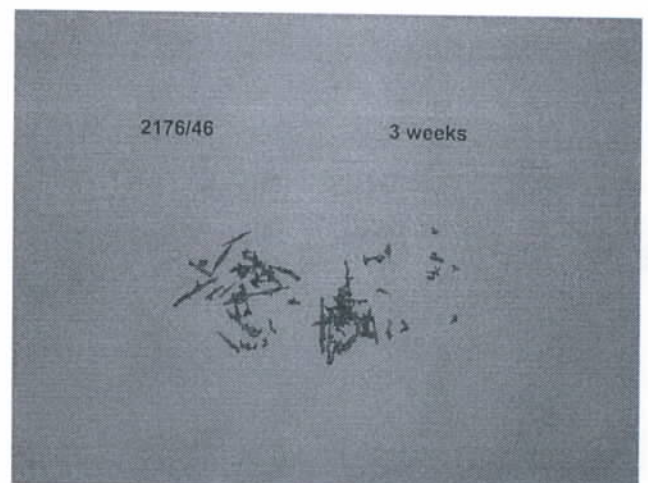
Original



After 7 days



After 14 days



After 21 days

The accreditation applies to the methods marked with * in the test report (Register no. D-PL-14160-01-00).

End of report